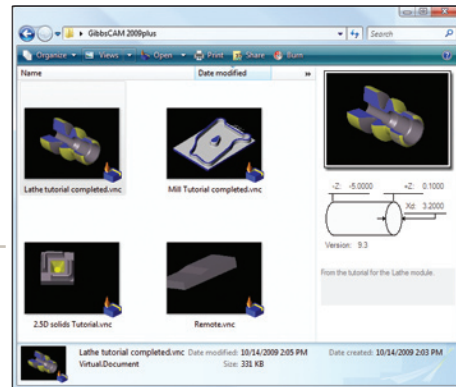


GibbsCAM 2010 Enhancements

The GibbsCAM 2010 release continues to enhance the system's overall quality, reliability and performance. Product enhancements and numerous fixes have been made throughout the entire system, delivering ongoing value to existing Maintenance customers as well as new users.

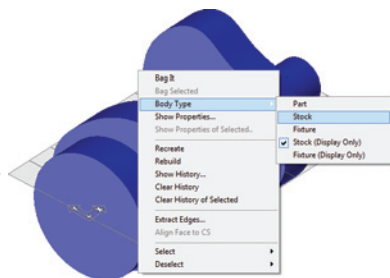
SYSTEM

- ▶ Compatible with Windows[®] 7:
 - More efficient use of RAM
 - Redesigned taskbar with jump lists
 - Libraries for easier file organization across locations
- ▶ 64-bit implementation allows users to address more memory and program larger and more complex parts



INTERFACE

- ▶ GibbsCAM part information in Windows Explorer preview pane and thumbnails (Windows 7 and Vista)
- ▶ Op Insert — ability to control where to insert new operations, preserving syncs in multi-flow parts
- ▶ Hidden-line toolpath in Tool Sim mode
- ▶ Right-mouse menu changes for greater productivity:
 - Geometry: Connect/Disconnect; Reverse Arc
 - Edges: Extract Edges
 - Solids: Body Types; Extract Edges; Clear History of Selected; submenus for Select and Deselect

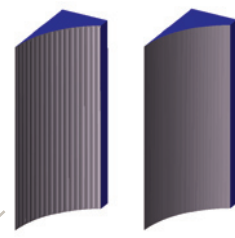
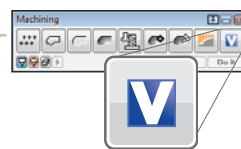


MILLING

- ▶ Support for HSK 32A, HSK 25A and Capto tool holders
- ▶ New option for HSM > Helix Bore plug-in: "Rapid In"

VOLUMILL™

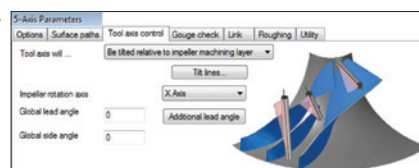
- ▶ New option: VoluMill high-speed roughing maximizes material removal rate and steadies tool load, reducing cycle times and extending tool life



Adaptive cuts

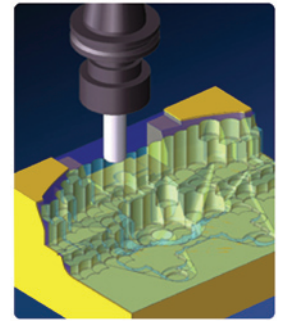
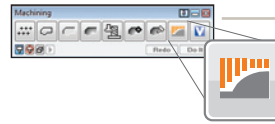
5-AXIS

- ▶ Updated 5-Axis library
- ▶ New plug-in for Geometry: Surface Tools
- ▶ New "Adaptive cuts" option
- ▶ Additional spiral machining options
- ▶ Improved impeller roughing
- ▶ New Gouge check projection options
- ▶ New Lead-In/Out "Flip" option
- ▶ New "Retract through tube center" option
- ▶ New axial shift damp option
- ▶ Countersink and keyway cutters available in 5-Axis



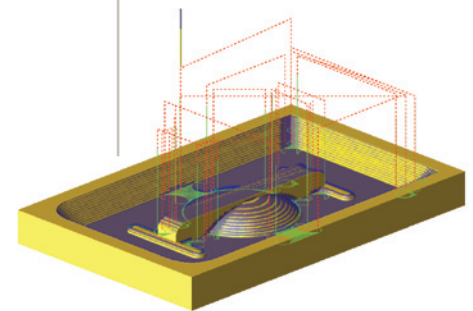
SOLIDS MACHINING

- ▶ Plunge Rough process now in CAM palette, with capabilities far exceeding the plug-in
- ▶ Advanced 3D documentation — tutorials, exercises, sample parts
- ▶ Enhancements to Advanced 3D:
 - “Use High Feed” checkbox locked on for retract styles “Shortest Route” and “Minimal Vertical”
 - Stepmover distance for ball endmill processes can be defined as a stepover or as a scallop height
 - Flats Cut enhanced for small angular differences
 - New boundary style: “Stock Bounding Box”
 - Pocketing option: “Hit Flats”
 - Contour option: “Trim to Ramp Advance” for waterline cuts
 - New stock management method “Workpiece Default”
- ▶ Use facet body as stock in solid pocketing



MULTI-TASK MACHINING (MTM)

- ▶ Sync Control dialog — drag operations while keeping syncs
- ▶ Undo/Redo changes in Sync Control dialog
- ▶ Altering syncs no longer affects operation comments

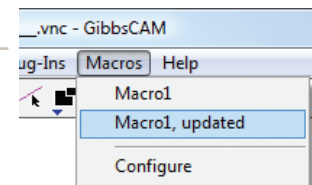


WIRE EDM

- ▶ New gluestop offset number and direction settings
- ▶ Option to clear around wire after retract
- ▶ User-customizable cutting conditions for Agie Classic/ Evolution style machines

MACROS

- ▶ Macros menu moved to top level
- ▶ Add/edit macros without restarting GibbsCAM
- ▶ Support for 5-Axis and Advanced 3D processes
- ▶ Support for calls to plug-ins



DATA EXCHANGE AND CAD INTEROPERABILITY

- ▶ Autodesk Inventor Add-In — 32-bit and 64-bit versions
- ▶ Autodesk Inventor 2010 Add-In supports the Inventor “ribbon” interface
- ▶ CATIA Reader supports V5 R19 files
- ▶ CimatronE 9.0 Add-In as an installation option
- ▶ KeyCreator import supports v8.0 files
- ▶ Pro/ENGINEER Wildfire 5.0 transfer
- ▶ STEP transfer through GRANITE V6
- ▶ SolidWorks Add-In — 32-bit or 64-bit — supports transfer from SolidWorks 2010



© 2009 Gibbs and Associates, a Cimatron Company. All rights reserved. The Gibbs and GibbsCAM logos, GibbsCAM, Virtual Gibbs, SolidSurfacer, Gibbs SFP, MTM, and “Powerfully Simple. Simply Powerful.” are either trademark(s) or registered trademark(s) of Gibbs and Associates in the United States and/or other countries. Windows and the Windows logo are trademarks of the Microsoft group of companies. All other brand or product names are trademarks or registered trademarks of their respective owners. This document is for informational purposes only and is subject to change.